

# Lower Thames Crossing

## 6.2 Environmental Statement Figures

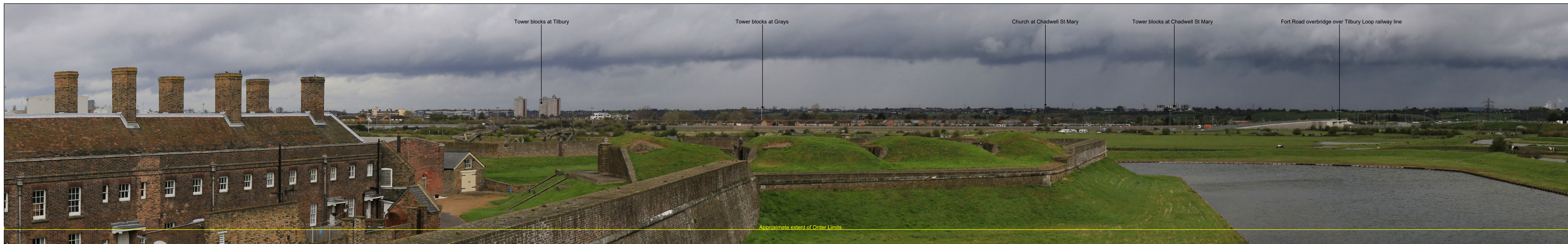
### Figure 7.17 - Representative Viewpoints - Winter and Summer Views (4 of 8)

APFP Regulation 5(2)(a)  
Infrastructure Planning  
(Applications: Prescribed Forms and Procedure)  
Regulations 2009  
Volume 6

**DATE:** October 2022

Planning Inspectorate Scheme Ref: TR010032  
Application Document Ref: TR010032/APP/6.2

**VERSION:** 1.0



P01	S8	05/08/2022	First Issued	BB	HP	SK
Rev	Status	Rev. Date	Purpose of revision	Drawn	Chck'd	Apprv'd

For location see Figure 7.16 - Visual Effects Drawing with Representative Viewpoint Locations

Camera: Canon EOS 6D MkII  
 Lens: Canon EF 50mm f/1.8 STM  
 Equipment: Manfrotto MA 454 Micro Positioning Plate  
 Manfrotto SBH-100 Ball Head

**Winter Viewpoint (Top):** N-01  
 Date and Time: 06/04/2022 09:21

FL, Max Aperture: 50mm, 1.75  
 Tripod Height: 1.5m  
 Viewpoint Ground Height: 2.8m AOD  
 Viewpoint Grid Reference: 565211E, 175312N

Distance to Order Limits: 730m  
 View Direction: NNE  
 GPS Accuracy: 5m

**Summer Viewpoint:** N-01  
 Date and Time: 24/06/2019 06:32

FL, Max Aperture: 50mm, 1.75  
 Tripod Height: 1.5m  
 Viewpoint Ground Height: 2.8m AOD  
 Viewpoint Grid Reference: 565211E, 175312N

Distance to Order Limits: 730m  
 View Direction: NNE  
 GPS Accuracy: 5m



**LOWER THAMES CROSSING**  
 5th Floor Beaufort House  
 15 St Botolph Street  
 London EC3A 7DT

Project: LOWER THAMES CROSSING  
 Drawing title: Figure 7.17  
 Representative Viewpoints - Winter and Summer Views  
 Viewpoint N-01  
 Sheet 1 of 2

Drawn	BB	Date - 05/08/2022	Status	Revision
Checked	HP	Date - 05/08/2022	S8	P01
Approved	SK	Date - 05/08/2022	Application Document No. TR010032/APP/6.2	
Drawing number HE540039-CJV-ELS-SZP_ZZ000000_Z-DR-LV-00002				



P01	S0	05/08/2022	First Issued	BB	HP	SK
Rev	Status	Rev. Date	Purpose of revision	Drawn	Chck'd	Apprv'd

For location see Figure 7.16 - Visual Effects Drawing with Representative Viewpoint Locations

Camera: Canon EOS 6D MkII  
 Lens: Canon EF 50mm f/1.8 STM  
 Equipment: Manfrotto MA 454 Micro Positioning Plate  
 Manfrotto SBH-100 Ball Head

**Winter Viewpoint (Top):** N-01  
 Date and Time: 06/04/2022 09:21

FL, Max Aperture: 50mm, 1.75  
 Tripod Height: 1.5m  
 Viewpoint Ground Height: 2.8m AOD  
 Viewpoint Grid Reference: 565211E, 175312N

Distance to Order Limits: 730m  
 View Direction (Centre of View): NNE  
 GPS Accuracy: 5m

**Summer Viewpoint:** N-01  
 Date and Time: 24/06/2019 06:32

FL, Max Aperture: 50mm, 1.75  
 Tripod Height: 1.5m  
 Viewpoint Ground Height: 2.8m AOD  
 Viewpoint Grid Reference: 565211E, 175312N

Distance to Order Limits: 730m  
 View Direction (Centre of View): NNE  
 GPS Accuracy: 5m



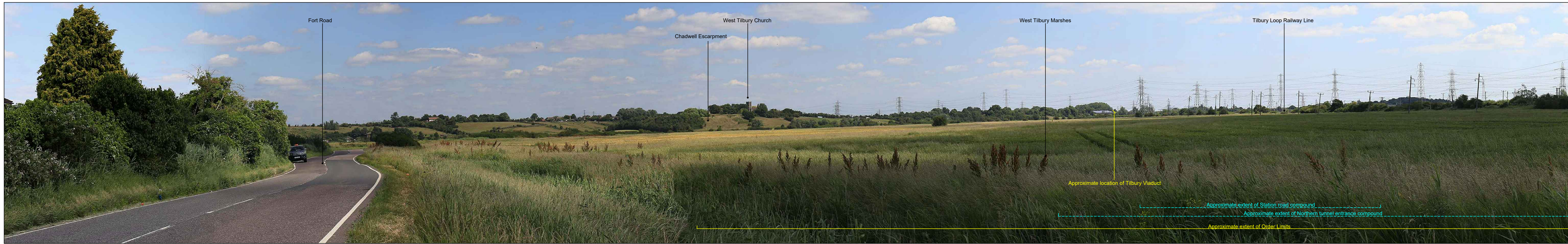
**Client**

**LOWER THAMES CROSSING**  
 5th Floor Beaufort House  
 15 St Botolph Street  
 London EC3A 7DT

**Project** LOWER THAMES CROSSING

**Drawing title** Figure 7.17  
 Representative Viewpoints - Winter and Summer Views  
 Viewpoint N-01  
 Sheet 2 of 2

Drawn	BB	Date - 05/08/2022	Status	Revision
Checked	HP	Date - 05/08/2022	S0	P01
Approved	SK	Date - 05/08/2022	Application Document No. TR010032/APP/6.2	
Drawing number		HE540039-CJV-ELS-SZP_ZZ000000_Z-DR-LV-00003		



Rev	Status	Rev. Date	Purpose of revision	Drawn	Chck'd	Apprv'd
P01	S8	05/08/2022	First Issued	BB	HP	SK

For location see Figure 7.16 - Visual Effects Drawing with Representative Viewpoint Locations

Camera: Canon EOS 6D MkII  
 Lens: Canon EF 50mm f/1.8 STM  
 Equipment: Manfrotto MA 454 Micro Positioning Plate  
 Manfrotto SBH-100 Ball Head

**Winter Viewpoint (Top):** N-02  
 Date and Time: 06/04/2022 10:49

FL, Max Aperture: 50mm, 1.75  
 Tripod Height: 1.5m  
 Viewpoint Ground Height: 6.2m AOD  
 Viewpoint Grid Reference: 565385E, 176613N

Distance to Order Limits: 200m  
 View Direction (Centre of View): ENE  
 GPS Accuracy: 5m

**Summer Viewpoint:** N-02  
 Date and Time: 14/06/2022 10:29

FL, Max Aperture: 50mm, 1.75  
 Tripod Height: 1.5m  
 Viewpoint Ground Height: 6.2m AOD  
 Viewpoint Grid Reference: 565385E, 176613N

Distance to Order Limits: 200m  
 View Direction (Centre of View): ENE  
 GPS Accuracy: 5m



**LOWER THAMES CROSSING**  
 5th Floor Beaufort House  
 15 St Botolph Street  
 London EC3A 7DT

Project: LOWER THAMES CROSSING  
 Drawing title: Figure 7.17  
 Representative Viewpoints - Winter and Summer Views  
 Viewpoint N-02  
 Sheet 1 of 2

Drawn	BB	Date - 05/08/2022	Status	Revision
Checked	HP	Date - 05/08/2022	S8	P01
Approved	SK	Date - 05/08/2022	Application Document No. TR010032/APP/6.2	
Drawing number		HE540039-CJV-ELS-SZP_ZZ000000_Z-DR-LV-00004		



P01	S8	05/08/2022	First Issued	BB	HP	SK
Rev	Status	Rev. Date	Purpose of revision	Drawn	Chck'd	Apprv'd

For location see Figure 7.16 - Visual Effects Drawing with Representative Viewpoint Locations

Camera: Canon EOS 6D MkII  
 Lens: Canon EF 50mm f/1.8 STM  
 Equipment: Manfrotto MA 454 Micro Positioning Plate  
 Manfrotto SBH-100 Ball Head

**Winter Viewpoint (Top):** N-02  
 Date and Time: 06/04/2022 10:49

FL, Max Aperture: 50mm, 1.75  
 Tripod Height: 1.5m  
 Viewpoint Ground Height: 6.2m AOD  
 Viewpoint Grid Reference: 565385E, 176613N

Distance to Order Limits: 200m  
 View Direction (Centre of View): ENE  
 GPS Accuracy: 5m

**Summer Viewpoint:** N-02  
 Date and Time: 14/06/2022 10:29

FL, Max Aperture: 50mm, 1.75  
 Tripod Height: 1.5m  
 Viewpoint Ground Height: 6.2m AOD  
 Viewpoint Grid Reference: 565385E, 176613N

Distance to Order Limits: 200m  
 View Direction (Centre of View): ENE  
 GPS Accuracy: 5m



**Client**

**LOWER THAMES CROSSING**  
 5th Floor Beaufort House  
 15 St Botolph Street  
 London EC3A 7DT

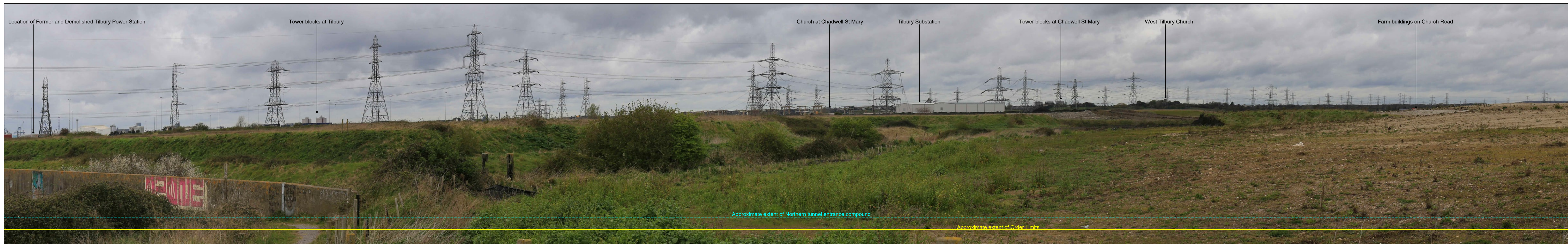
**Project**

LOWER THAMES CROSSING

**Drawing title**

Figure 7.17  
 Representative Viewpoints - Winter and Summer Views  
 Viewpoint N-02  
 Sheet 2 of 2

Drawn	BB	Date - 05/08/2022	Status	Revision
Checked	HP	Date - 05/08/2022	S8	P01
Approved	SK	Date - 05/08/2022	Application Document No. TR010032/APP/6.2	
Drawing number		HE540039-CJV-ELS-SZP_ZZ000000_Z-DR-LV-00005		



P01	S8	05/08/2022	First Issued	BB	HP	SK
Rev	Status	Rev. Date	Purpose of revision	Drawn	Chck'd	Apprv'd

For location see Figure 7.16 - Visual Effects Drawing with Representative Viewpoint Locations

Camera: Canon EOS 6D MkII  
 Lens: Canon EF 50mm f/1.8 STM  
 Equipment: Manfrotto MA 454 Micro Positioning Plate  
 Manfrotto SBH-100 Ball Head

**Winter Viewpoint (Top):** N-03  
 Date and Time: 06/04/2022 10:06

FL, Max Aperture: 50mm, 1.75  
 Tripod Height: 1.5m  
 Viewpoint Ground Height: 8.0m AOD  
 Viewpoint Grid Reference: 566772E, 175496N

Distance to Order Limits: 250m  
 View Direction (Centre of View): NNE  
 GPS Accuracy: 5m

**Summer Viewpoint:** N-03  
 Date and Time: 03/06/2019 11:32

FL, Max Aperture: 50mm, 1.75  
 Tripod Height: 1.5m  
 Viewpoint Ground Height: 8.0m AOD  
 Viewpoint Grid Reference: 566772E, 175496N

Distance to Order Limits: 250m  
 View Direction (Centre of View): NNE  
 GPS Accuracy: 5m



**LOWER THAMES CROSSING**  
 5th Floor Beaufort House  
 15 St Botolph Street  
 London EC3A 7DT

Project: LOWER THAMES CROSSING  
 Drawing title: Figure 7.17  
 Representative Viewpoints - Winter and Summer Views  
 Viewpoint N-03  
 Sheet 1 of 3

Drawn	BB	Date - 05/08/2022	Status	Revision
Checked	HP	Date - 05/08/2022	S8	P01
Approved	SK	Date - 05/08/2022	Application Document No. TR010032/APP/6.2	
Drawing number		HE540039-CJV-ELS-SZP_ZZ000000_Z-DR-LV-00008		



Rev	Status	Rev. Date	Purpose of revision	Drawn	Chck'd	Apprv'd
P01	S8	05/08/2022	First Issued	BB	HP	SK

For location see Figure 7.16 - Visual Effects Drawing with Representative Viewpoint Locations

Camera: Canon EOS 6D MkII  
 Lens: Canon EF 50mm f/1.8 STM  
 Equipment: Manfrotto MA 454 Micro Positioning Plate  
 Manfrotto SBH-100 Ball Head

**Winter Viewpoint (Top):** N-03  
 Date and Time: 06/04/2022 10:06

FL, Max Aperture: 50mm, 1.75  
 Tripod Height: 1.5m  
 Viewpoint Ground Height: 8.0m AOD  
 Viewpoint Grid Reference: 566772E, 175496N

Distance to Order Limits: 250m  
 View Direction (Centre of View): NNE  
 GPS Accuracy: 5m

**Summer Viewpoint:** N-03  
 Date and Time: 03/06/2019 11:32

FL, Max Aperture: 50mm, 1.75  
 Tripod Height: 1.5m  
 Viewpoint Ground Height: 8.0m AOD  
 Viewpoint Grid Reference: 566772E, 175496N

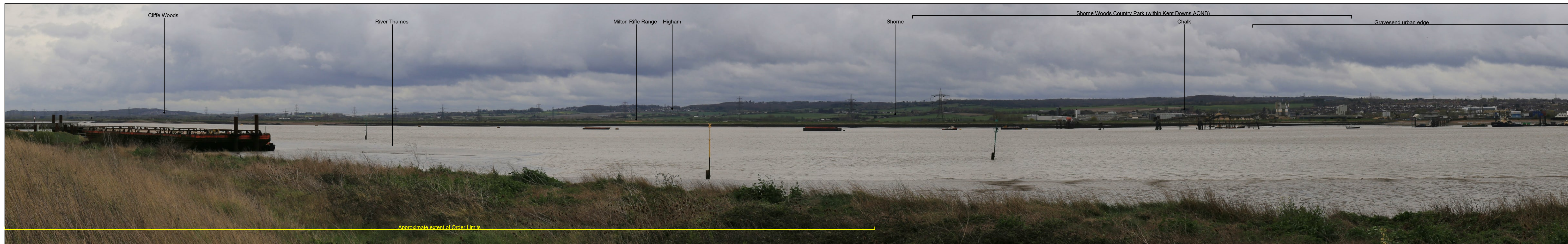
Distance to Order Limits: 250m  
 View Direction (Centre of View): NNE  
 GPS Accuracy: 5m



**LOWER THAMES CROSSING**  
 5th Floor Beaufort House  
 15 St Botolph Street  
 London EC3A 7DT

Project: LOWER THAMES CROSSING  
 Drawing title: Figure 7.17  
 Representative Viewpoints - Winter and Summer Views  
 Viewpoint N-03  
 Sheet 2 of 3

Drawn	BB	Date - 05/08/2022	Status	Revision
Checked	HP	Date - 05/08/2022	S8	P01
Approved	SK	Date - 05/08/2022	Application Document No. TR010032/APP/6.2	
Drawing number		HE540039-CJV-ELS-SZP_ZZ000000_Z-DR-LV-00009		



P01	S8	05/08/2022	First Issued	BB	HP	SK
Rev	Status	Rev. Date	Purpose of revision	Drawn	Chck'd	Apprv'd

For location see Figure 7.16 - Visual Effects Drawing with Representative Viewpoint Locations

Camera: Canon EOS 6D MkII  
 Lens: Canon EF 50mm f/1.8 STM  
 Equipment: Manfrotto MA 454 Micro Positioning Plate  
 Manfrotto SBH-100 Ball Head

**Winter Viewpoint (Top):** N-03  
 Date and Time: 06/04/2022 10:06

FL, Max Aperture: 50mm, 1.75  
 Tripod Height: 1.5m  
 Viewpoint Ground Height: 8.0m AOD  
 Viewpoint Grid Reference: 566772E, 175496N

Distance to Order Limits: 250m  
 View Direction (Centre of View): NNE  
 GPS Accuracy: 5m

**Summer Viewpoint:** N-03  
 Date and Time: 03/06/2019 11:32

FL, Max Aperture: 50mm, 1.75  
 Tripod Height: 1.5m  
 Viewpoint Ground Height: 8.0m AOD  
 Viewpoint Grid Reference: 566772E, 175496N

Distance to Order Limits: 250m  
 View Direction (Centre of View): NNE  
 GPS Accuracy: 5m



**LOWER THAMES CROSSING**  
 5th Floor Beaufort House  
 15 St Botolph Street  
 London EC3A 7DT

Project: LOWER THAMES CROSSING  
 Drawing title: Figure 7.17  
 Representative Viewpoints - Winter and Summer Views  
 Viewpoint N-03  
 Sheet 3 of 3

Drawn	BB	Date - 05/08/2022	Status	Revision
Checked	HP	Date - 05/08/2022	S8	P01
Approved	SK	Date - 05/08/2022	Application Document No. TR010032/APP/6.2	
Drawing number		HE540039-CJV-ELS-SZP_ZZ000000_Z-DR-LV-00010		





Rev	Status	Rev. Date	Purpose of revision	Drawn	Chck'd	Apprv'd
P01	S8	05/08/2022	First Issued	BB	HP	SK

For location see Figure 7.16 - Visual Effects Drawing with Representative Viewpoint Locations

Camera: Canon EOS 6D MkII  
 Lens: Canon EF 50mm f/1.8 STM  
 Equipment: Manfrotto MA 454 Micro Positioning Plate  
 Manfrotto SBH-100 Ball Head

**Winter Viewpoint (Top):** N-04  
 Date and Time: 06/04/2022 13:25

FL, Max Aperture: 50mm, 1.75  
 Tripod Height: 1.5m  
 Viewpoint Ground Height: 2.9m AOD  
 Viewpoint Grid Reference: 567806E, 175799N

Distance to Order Limits: 0m  
 View Direction (Centre of View): WNW  
 GPS Accuracy: 5m

**Summer Viewpoint:** N-04  
 Date and Time: 14/06/2022 09:15

FL, Max Aperture: 50mm, 1.75  
 Tripod Height: 1.5m  
 Viewpoint Ground Height: 2.9m AOD  
 Viewpoint Grid Reference: 567806E, 175799N

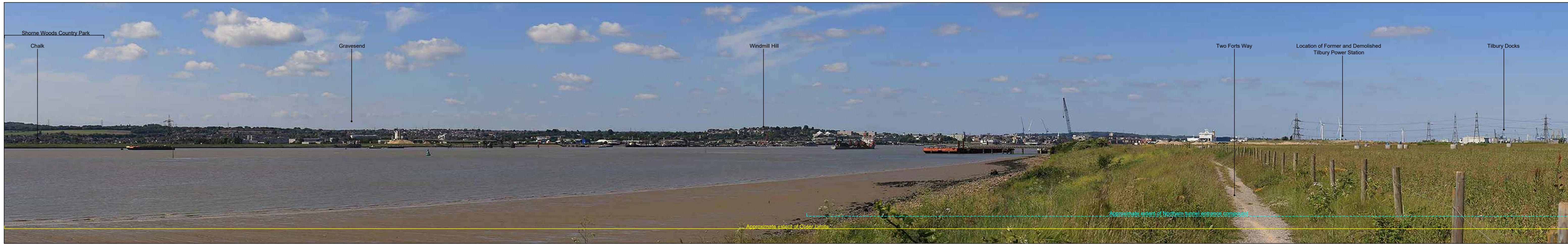
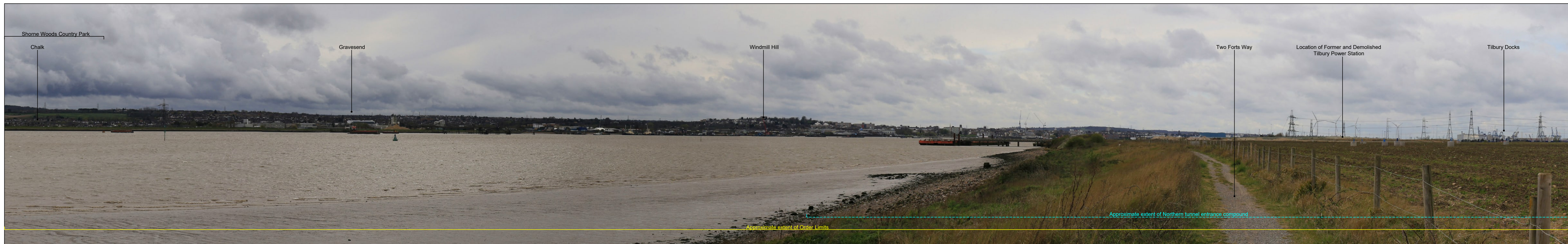
Distance to Order Limits: 0m  
 View Direction (Centre of View): WNW  
 GPS Accuracy: 5m



**LOWER THAMES CROSSING**  
 5th Floor Beaufort House  
 15 St Botolph Street  
 London EC3A 7DT

Project: LOWER THAMES CROSSING  
 Drawing title: Figure 7.17  
 Representative Viewpoints - Winter and Summer Views  
 Viewpoint N-04  
 Sheet 1 of 4

Drawn	BB	Date	- 05/08/2022	Status	S8	Revision	P01
Checked	HP	Date	- 05/08/2022	Application Document No. TR010032/APP/6.2			
Approved	SK	Date	- 05/08/2022	Drawing number HE540039-CJV-ELS-SZP_ZZ000000_Z-DR-LV-00011			



Rev	Status	Rev. Date	Purpose of revision	Drawn	Chck'd	Apprv'd
P01	S8	05/08/2022	First Issued	BB	HP	SK

For location see Figure 7.16 - Visual Effects Drawing with Representative Viewpoint Locations

Camera: Canon EOS 6D MkII  
 Lens: Canon EF 50mm f/1.8 STM  
 Equipment: Manfrotto MA 454 Micro Positioning Plate  
 Manfrotto SBH-100 Ball Head

**Winter Viewpoint (Top):** N-04  
 Date and Time: 06/04/2022 13:25

FL, Max Aperture: 50mm, 1.75  
 Tripod Height: 1.5m  
 Viewpoint Ground Height: 2.9m AOD  
 Viewpoint Grid Reference: 567806E, 175799N

Distance to Order Limits: 0m  
 View Direction (Centre of View): WNW  
 GPS Accuracy: 5m

**Summer Viewpoint:** N-04  
 Date and Time: 14/06/2022 09:15

FL, Max Aperture: 50mm, 1.75  
 Tripod Height: 1.5m  
 Viewpoint Ground Height: 2.9m AOD  
 Viewpoint Grid Reference: 567806E, 175799N

Distance to Order Limits: 0m  
 View Direction (Centre of View): WNW  
 GPS Accuracy: 5m



**LOWER THAMES CROSSING**  
 5th Floor Beaufort House  
 15 St Botolph Street  
 London EC3A 7DT

Project: LOWER THAMES CROSSING  
 Drawing title: Figure 7.17  
 Representative Viewpoints - Winter and Summer Views  
 Viewpoint N-04  
 Sheet 2 of 4

Drawn	BB	Date - 05/08/2022	Status	Revision
Checked	HP	Date - 05/08/2022	S8	P01
Approved	SK	Date - 05/08/2022	Application Document No. TR010032/APP/6.2	
Drawing number HE540039-CJV-ELS-SZP_ZZ000000_Z-DR-LV-00012				



Rev	Status	Rev. Date	Purpose of revision	Drawn	Chck'd	Apprv'd
P01	S8	05/08/2022	First Issued	BB	HP	SK

For location see Figure 7.16 - Visual Effects Drawing with Representative Viewpoint Locations

Camera: Canon EOS 6D MkII  
 Lens: Canon EF 50mm f/1.8 STM  
 Equipment: Manfrotto MA 454 Micro Positioning Plate  
 Manfrotto SBH-100 Ball Head

**Winter Viewpoint (Top):** N-04  
 Date and Time: 06/04/2022 13:25

FL, Max Aperture: 50mm, 1.75  
 Tripod Height: 1.5m  
 Viewpoint Ground Height: 2.9m AOD  
 Viewpoint Grid Reference: 567806E, 175799N

Distance to Order Limits: 0m  
 View Direction (Centre of View): WNW  
 GPS Accuracy: 5m

**Summer Viewpoint:** N-04  
 Date and Time: 14/06/2022 09:15

FL, Max Aperture: 50mm, 1.75  
 Tripod Height: 1.5m  
 Viewpoint Ground Height: 2.9m AOD  
 Viewpoint Grid Reference: 567806E, 175799N

Distance to Order Limits: 0m  
 View Direction (Centre of View): WNW  
 GPS Accuracy: 5m



**Client**

**LOWER THAMES CROSSING**  
 5th Floor Beaufort House  
 15 St Botolph Street  
 London EC3A 7DT

**Project** LOWER THAMES CROSSING

**Drawing title** Figure 7.17  
 Representative Viewpoints - Winter and Summer Views  
 Viewpoint N-04  
 Sheet 3 of 4

Drawn	BB	Date - 05/08/2022	Status	Revision
Checked	HP	Date - 05/08/2022	S8	P01
Approved	SK	Date - 05/08/2022	Application Document No. TR010032/APP/6.2	
Drawing number HE540039-CJV-ELS-SZP_ZZ000000_Z-DR-LV-00013				



Rev	Status	Rev. Date	Purpose of revision	Drawn	Chck'd	Apprv'd
P01	S8	05/08/2022	First Issued	BB	HP	SK

For location see Figure 7.16 - Visual Effects Drawing with Representative Viewpoint Locations

Camera: Canon EOS 6D MkII  
 Lens: Canon EF 50mm f/1.8 STM  
 Equipment: Manfrotto MA 454 Micro Positioning Plate  
 Manfrotto SBH-100 Ball Head

**Winter Viewpoint (Top):**  
 Date and Time: N-04  
 06/04/2022 13:25

FL, Max Aperture: 50mm, 1.75  
 Tripod Height: 1.5m  
 Viewpoint Ground Height: 2.9m AOD  
 Viewpoint Grid Reference: 567806E, 175799N

**Summer Viewpoint:**  
 Date and Time: N-04  
 14/06/2022 09:15

FL, Max Aperture: 50mm, 1.75  
 Tripod Height: 1.5m  
 Viewpoint Ground Height: 2.9m AOD  
 Viewpoint Grid Reference: 567806E, 175799N

Distance to Order Limits: 0m  
 View Direction (Centre of View): WNW  
 GPS Accuracy: 5m



**LOWER THAMES CROSSING**  
 5th Floor Beaufort House  
 15 St Botolph Street  
 London EC3A 7DT

Project: LOWER THAMES CROSSING  
 Drawing title: Figure 7.17  
 Representative Viewpoints - Winter and Summer Views  
 Viewpoint N-04  
 Sheet 4 of 4

Drawn	BB	Date - 05/08/2022	Status	Revision
Checked	HP	Date - 05/08/2022	S8	P01
Approved	SK	Date - 05/08/2022	Application Document No. TR010032/APP/6.2	
Drawing number		HE540039-CJV-ELS-SZP_ZZ000000_Z-DR-LV-00014		



P01	S8	05/08/2022	First Issued	BB	HP	SK
Rev	Status	Rev. Date	Purpose of revision	Drawn	Chck'd	Apprv'd

For location see Figure 7.16 - Visual Effects Drawing with Representative Viewpoint Locations

Camera: Canon EOS 6D MkII  
 Lens: Canon EF 50mm f/1.8 STM  
 Equipment: Manfrotto MA 454 Micro Positioning Plate  
 Manfrotto SBH-100 Ball Head

**Winter Viewpoint (Top):** N-05  
 Date and Time: 06/04/2022 12:40

FL, Max Aperture: 50mm, 1.75  
 Tripod Height: 1.5m  
 Viewpoint Ground Height: 17.4m AOD  
 Viewpoint Grid Reference: 569093E, 176768N

Distance to Order Limits: 185m  
 View Direction (Centre of View): SSW  
 GPS Accuracy: 5m

**Summer Viewpoint:** N-05  
 Date and Time: 14/06/2022 08:24

FL, Max Aperture: 50mm, 1.75  
 Tripod Height: 1.5m  
 Viewpoint Ground Height: 17.4m AOD  
 Viewpoint Grid Reference: 569093E, 176768N

Distance to Order Limits: 185m  
 View Direction (Centre of View): SSW  
 GPS Accuracy: 5m



**LOWER THAMES CROSSING**  
 5th Floor Beaufort House  
 15 St Botolph Street  
 London EC3A 7DT

Project: LOWER THAMES CROSSING  
 Drawing title: Figure 7.17  
 Representative Viewpoints - Winter and Summer Views  
 Viewpoint N-05  
 Sheet 1 of 3

Drawn	BB	Date - 05/08/2022	Status	Revision
Checked	HP	Date - 05/08/2022	S8	P01
Approved	SK	Date - 05/08/2022	Application Document No. TR010032/APP/6.2	
Drawing number		HE540039-CJV-ELS-SZP_ZZ000000_Z-DR-LV-00019		



Rev	Status	Rev. Date	Purpose of revision	Drawn	Chck'd	Apprv'd
P01	S8	05/08/2022	First Issued	BB	HP	SK

For location see Figure 7.16 - Visual Effects Drawing with Representative Viewpoint Locations

**Winter Viewpoint (Top):** N-05  
Date and Time: 06/04/2022 12:40

Camera: Canon EOS 6D MkII  
Lens: Canon EF 50mm f/1.8 STM  
Equipment: Manfrotto MA 454 Micro Positioning Plate  
Manfrotto SBH-100 Ball Head

FL, Max Aperture: 50mm, 1.75  
Tripod Height: 1.5m  
Viewpoint Ground Height: 17.4m AOD  
Viewpoint Grid Reference: 569093E, 176768N

**Summer Viewpoint:** N-05  
Date and Time: 14/06/2022 08:24

FL, Max Aperture: 50mm, 1.75  
Tripod Height: 1.5m  
Viewpoint Ground Height: 17.4m AOD  
Viewpoint Grid Reference: 569093E, 176768N

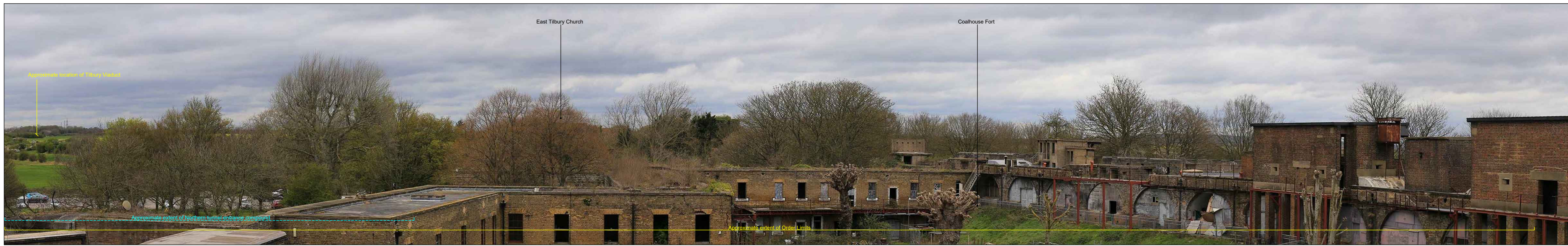
Distance to Order Limits: 185m  
View Direction (Centre of View): SSW  
GPS Accuracy: 5m



**LOWER THAMES CROSSING**  
5th Floor Beaufort House  
15 St Botolph Street  
London EC3A 7DT

Project: LOWER THAMES CROSSING  
Drawing title: Figure 7.17  
Representative Viewpoints - Winter and Summer Views  
Viewpoint N-05  
Sheet 2 of 3

Drawn	BB	Date - 05/08/2022	Status	Revision
Checked	HP	Date - 05/08/2022	S8	P01
Approved	SK	Date - 05/08/2022	Application Document No. TR010032/APP/6.2	
Drawing number HE540039-CJV-ELS-SZP_ZZ000000_Z-DR-LV-00020				



P01	S8	05/08/2022	First Issued	BB	HP	SK
Rev	Status	Rev. Date	Purpose of revision	Drawn	Chck'd	Apprv'd

For location see Figure 7.16 - Visual Effects Drawing with Representative Viewpoint Locations

Camera: Canon EOS 6D MkII  
 Lens: Canon EF 50mm f/1.8 STM  
 Equipment: Manfrotto MA 454 Micro Positioning Plate  
 Manfrotto SBH-100 Ball Head

**Winter Viewpoint (Top):**  
 Date and Time: N-05  
 06/04/2022 12:40

FL, Max Aperture: 50mm, 1.75  
 Tripod Height: 1.5m  
 Viewpoint Ground Height: 17.4m AOD  
 Viewpoint Grid Reference: 569093E, 176768N

Distance to Order Limits: 185m  
 (Centre of View): SSW  
 GPS Accuracy: 5m

**Summer Viewpoint:**  
 Date and Time: N-05  
 14/06/2022 08:24

FL, Max Aperture: 50mm, 1.75  
 Tripod Height: 1.5m  
 Viewpoint Ground Height: 17.4m AOD  
 Viewpoint Grid Reference: 569093E, 176768N

Distance to Order Limits: 185m  
 View Direction (Centre of View): SSW  
 GPS Accuracy: 5m



**LOWER THAMES CROSSING**  
 5th Floor Beaufort House  
 15 St Botolph Street  
 London EC3A 7DT

Project: LOWER THAMES CROSSING  
 Drawing title: Figure 7.17  
 Representative Viewpoints - Winter and Summer Views  
 Viewpoint N-05  
 Sheet 3 of 3

Drawn	BB	Date	- 05/08/2022	Status	S8	Revision	P01
Checked	HP	Date	- 05/08/2022				
Approved	SK	Date	- 05/08/2022	Application Document No. TR010032/APP/6.2			
Drawing number		HE540039-CJV-ELS-SZP_ZZ000000_Z-DR-LV-00021					



Rev	Status	Rev. Date	Purpose of revision	Drawn	Chck'd	Apprv'd
P01	S8	05/08/2022	First Issued	BB	HP	SK

For location see Figure 7.16 - Visual Effects Drawing with Representative Viewpoint Locations

Camera: Canon EOS 6D MkII  
 Lens: Canon EF 50mm f/1.8 STM  
 Equipment: Manfrotto MA 454 Micro Positioning Plate  
 Manfrotto SBH-100 Ball Head

**Winter Viewpoint (Top):** N-06  
 Date and Time: 18/02/2019 14:45

FL, Max Aperture: 50mm, 1.75  
 Tripod Height: 1.5m  
 Viewpoint Ground Height: 4.3m AOD  
 Viewpoint Grid Reference: 567539E, 177129N

Distance to Order Limits: 0m  
 View Direction (Centre of View): SSE  
 GPS Accuracy: 5m

**Summer Viewpoint:** N-06  
 Date and Time: 14/06/2022 08:55

FL, Max Aperture: 50mm, 1.75  
 Tripod Height: 1.5m  
 Viewpoint Ground Height: 4.3m AOD  
 Viewpoint Grid Reference: 567539E, 177129N

Distance to Order Limits: 0m  
 View Direction (Centre of View): SSE  
 GPS Accuracy: 5m



**LOWER THAMES CROSSING**  
 5th Floor Beaufort House  
 15 St Botolph Street  
 London EC3A 7DT

Project: LOWER THAMES CROSSING  
 Drawing title: Figure 7.17  
 Representative Viewpoints - Winter and Summer Views  
 Viewpoint N-06  
 Sheet 1 of 1

Drawn	BB	Date - 05/08/2022	Status	Revision
Checked	HP	Date - 05/08/2022	S8	P01
Approved	SK	Date - 05/08/2022	Application Document No. TR010032/APP/6.2	
Drawing number		HE540039-CJV-ELS-SZP_ZZ000000_Z-DR-LV-00022		





Rev	Status	Rev. Date	Purpose of revision	Drawn	Chck'd	Apprv'd
P01	S8	05/08/2022	First Issued	BB	HP	SK

For location see Figure 7.16 - Visual Effects Drawing with Representative Viewpoint Locations

**Winter Viewpoint (Top):** N-07  
Date and Time: 18/02/2019 11:42

Camera: Canon EOS 6D MkII  
Lens: Canon EF 50mm f/1.8 STM  
Equipment: Manfrotto MA 454 Micro Positioning Plate  
Manfrotto SBH-100 Ball Head

FL, Max Aperture: 50mm, 1.75  
Tripod Height: 1.5m  
Viewpoint Ground Height: 10.4m AOD  
Viewpoint Grid Reference: 567722E, 177829N

Distance to Order Limits: 7m  
View Direction (Centre of View): WSW  
GPS Accuracy: 5m

**Summer Viewpoint:** N-07  
Date and Time: 03/06/2019 14:42

FL, Max Aperture: 50mm, 1.75  
Tripod Height: 1.5m  
Viewpoint Ground Height: 10.4m AOD  
Viewpoint Grid Reference: 567722E, 177829N

Distance to Order Limits: 7m  
View Direction (Centre of View): WSW  
GPS Accuracy: 5m



**Client**

**LOWER THAMES CROSSING**  
5th Floor Beaufort House  
15 St Botolph Street  
London EC3A 7DT

**Project**

LOWER THAMES CROSSING

**Drawing title**

Figure 7.17  
Representative Viewpoints - Winter and Summer Views  
Viewpoint N-07  
Sheet 1 of 2

Drawn	BB	Date - 05/08/2022	Status	Revision
Checked	HP	Date - 05/08/2022	S8	P01
Approved	SK	Date - 05/08/2022	Application Document No. TR010032/APP/6.2	
Drawing number HE540039-CJV-ELS-SZP_ZZ000000_Z-DR-LV-00023				



Rev	Status	Rev. Date	Purpose of revision	Drawn	Chck'd	Apprv'd
P01	S8	05/08/2022	First Issued	BB	HP	SK

For location see Figure 7.16 - Visual Effects Drawing with Representative Viewpoint Locations

Camera: Canon EOS 6D MkII  
 Lens: Canon EF 50mm f/1.8 STM  
 Equipment: Manfrotto MA 454 Micro Positioning Plate  
 Manfrotto SBH-100 Ball Head

**Winter Viewpoint (Top):** N-07  
 Date and Time: 18/02/2019 11:45

FL, Max Aperture: 50mm, 1.75  
 Tripod Height: 1.5m  
 Viewpoint Ground Height: 10.4m AOD  
 Viewpoint Grid Reference: 567722E, 177829N

Distance to Order Limits: 7m  
 View Direction (Centre of View): WSW  
 GPS Accuracy: 5m

**Summer Viewpoint:** N-07  
 Date and Time: 03/06/2019 14:42

FL, Max Aperture: 50mm, 1.75  
 Tripod Height: 1.5m  
 Viewpoint Ground Height: 10.4m AOD  
 Viewpoint Grid Reference: 567722E, 177829N

Distance to Order Limits: 7m  
 View Direction (Centre of View): WSW  
 GPS Accuracy: 5m



**Client**

**LOWER THAMES CROSSING**  
 5th Floor Beaufort House  
 15 St Botolph Street  
 London EC3A 7DT

**Project** LOWER THAMES CROSSING

**Drawing title** Figure 7.17  
 Representative Viewpoints - Winter and Summer Views  
 Viewpoint N-07  
 Sheet 2 of 2

Drawn	BB	Date - 05/08/2022	Status	Revision
Checked	HP	Date - 05/08/2022	S8	P01
Approved	SK	Date - 05/08/2022	Application Document No. TR010032/APP/6.2	
Drawing number HE540039-CJV-ELS-SZP_ZZ000000_Z-DR-LV-00024				



Rev	Status	Rev. Date	Purpose of revision	Drawn	Chck'd	Apprv'd
P01	S8	05/08/2022	First Issued	BB	HP	SK

For location see Figure 7.16 - Visual Effects Drawing with Representative Viewpoint Locations

Camera: Canon EOS 6D MkII  
 Lens: Canon EF 50mm f/1.8 STM  
 Equipment: Manfrotto MA 454 Micro Positioning Plate  
 Manfrotto SBH-100 Ball Head

**Winter Viewpoint (Top):** N-08  
 Date and Time: 18/02/2019 14:52

FL, Max Aperture: 50mm, 1.75  
 Tripod Height: 1.5m  
 Viewpoint Ground Height: 4.9m AOD  
 Viewpoint Grid Reference: 566777E, 177724N

Distance to Order Limits: 0m  
 View Direction (Centre of View): E  
 GPS Accuracy: 5m

**Summer Viewpoint:** N-08  
 Date and Time: 03/06/2019 14:55

FL, Max Aperture: 50mm, 1.75  
 Tripod Height: 1.5m  
 Viewpoint Ground Height: 4.9m AOD  
 Viewpoint Grid Reference: 566777E, 177724N

Distance to Order Limits: 0m  
 View Direction (Centre of View): E  
 GPS Accuracy: 5m



**Client**

**LOWER THAMES CROSSING**  
 5th Floor Beaufort House  
 15 St Botolph Street  
 London EC3A 7DT

**Project**

**LOWER THAMES CROSSING**  
 Drawing title: Figure 7.17  
 Representative Viewpoints - Winter and Summer Views  
 Viewpoint N-08  
 Sheet 1 of 2

Drawn	BB	Date	- 05/08/2022	Status	S8	Revision	P01
Checked	HP	Date	- 05/08/2022	Application Document No. TR010032/APP/6.2			
Approved	SK	Date	- 05/08/2022	Drawing number			
HE540039-CJV-ELS-SZP_ZZ000000_Z-DR-LV-00025							



P01	S8	05/08/2022	First Issued	BB	HP	SK
Rev	Status	Rev. Date	Purpose of revision	Drawn	Chck'd	Apprv'd

For location see Figure 7.16 - Visual Effects Drawing with Representative Viewpoint Locations

Camera: Canon EOS 6D MkII  
 Lens: Canon EF 50mm f/1.8 STM  
 Equipment: Manfrotto MA 454 Micro Positioning Plate  
 Manfrotto SBH-100 Ball Head

**Winter Viewpoint (Top):** N-08  
 Date and Time: 18/02/2019 14:52

FL, Max Aperture: 50mm, 1.75  
 Tripod Height: 1.5m  
 Viewpoint Ground Height: 4.9m AOD  
 Viewpoint Grid Reference: 566777E, 177724N

Distance to Order Limits: 0m  
 View Direction (Centre of View): E  
 GPS Accuracy: 5m

**Summer Viewpoint:** N-08  
 Date and Time: 03/06/2019 14:55

FL, Max Aperture: 50mm, 1.75  
 Tripod Height: 1.5m  
 Viewpoint Ground Height: 4.9m AOD  
 Viewpoint Grid Reference: 566777E, 177724N

Distance to Order Limits: 0m  
 View Direction (Centre of View): E  
 GPS Accuracy: 5m



**Client**

**LOWER THAMES CROSSING**

5th Floor Beaufort House  
 15 St Botolph Street  
 London EC3A 7DT

**Project**

LOWER THAMES CROSSING

**Drawing title**

Figure 7.17  
 Representative Viewpoints - Winter and Summer Views  
 Viewpoint N-08  
 Sheet 2 of 2

Drawn	BB	Date - 05/08/2022	Status	Revision
Checked	HP	Date - 05/08/2022	S8	P01
Approved	SK	Date - 05/08/2022	Application Document No. TR010032/APP/6.2	
Drawing number				
HE540039-CJV-ELS-SZP_ZZ000000_Z-DR-LV-00026				



Rev	Status	Rev. Date	Purpose of revision	Drawn	Chck'd	Apprv'd
P01	S8	05/08/2022	First Issued	BB	HP	SK

For location see Figure 7.16 - Visual Effects Drawing with Representative Viewpoint Locations

Camera: Canon EOS 6D MkII  
 Lens: Canon EF 50mm f/1.8 STM  
 Equipment: Manfrotto MA 454 Micro Positioning Plate  
 Manfrotto SBH-100 Ball Head

**Winter Viewpoint (Top):** N-09  
 Date and Time: 18/02/2019 15:15

FL, Max Aperture: 50mm, 1.75  
 Tripod Height: 1.5m  
 Viewpoint Ground Height: 26.3m AOD  
 Viewpoint Grid Reference: 566219E, 178124N

**Summer Viewpoint:** N-09  
 Date and Time: 03/06/2019 15:13

FL, Max Aperture: 50mm, 1.75  
 Tripod Height: 1.5m  
 Viewpoint Ground Height: 26.3m AOD  
 Viewpoint Grid Reference: 566219E, 178124N

Distance to Order Limits: 450m  
 View Direction (Centre of View): ENE  
 GPS Accuracy: 5m



**Client**

**LOWER THAMES CROSSING**  
 5th Floor Beaufort House  
 15 St Botolph Street  
 London EC3A 7DT

**Project**

LOWER THAMES CROSSING  
 Drawing title: Figure 7.17  
 Representative Viewpoints - Winter and Summer Views  
 Viewpoint N-09  
 Sheet 1 of 2

Drawn	BB	Date - 05/08/2022	Status	Revision
Checked	HP	Date - 05/08/2022	S8	P01
Approved	SK	Date - 05/08/2022	Application Document No. TR010032/APP/6.2	
Drawing number HE540039-CJV-ELS-SZP_ZZ000000_Z-DR-LV-00027				



P01	S8	05/08/2022	First Issued	BB	HP	SK
Rev	Status	Rev. Date	Purpose of revision	Drawn	Chck'd	Apprv'd

For location see Figure 7.16 - Visual Effects Drawing with Representative Viewpoint Locations

Camera: Canon EOS 6D MkII  
 Lens: Canon EF 50mm f/1.8 STM  
 Equipment: Manfrotto MA 454 Micro Positioning Plate  
 Manfrotto SBH-100 Ball Head

**Winter Viewpoint (Top):** N-09  
 Date and Time: 18/02/2019 15:15

FL, Max Aperture: 50mm, 1.75  
 Tripod Height: 1.5m  
 Viewpoint Ground Height: 26.3m AOD  
 Viewpoint Grid Reference: 566219E, 178124N

**Summer Viewpoint:** N-09  
 Date and Time: 03/06/2019 15:13

FL, Max Aperture: 50mm, 1.75  
 Tripod Height: 1.5m  
 Viewpoint Ground Height: 26.3m AOD  
 Viewpoint Grid Reference: 566219E, 178124N

Distance to Order Limits: 450m  
 View Direction (Centre of View): ENE  
 GPS Accuracy: 5m



**Client**  
**LOWER THAMES CROSSING**  
 5th Floor Beaufort House  
 15 St Botolph Street  
 London EC3A 7DT

**Project**  
 LOWER THAMES CROSSING

**Drawing title**  
 Figure 7.17  
 Representative Viewpoints - Winter and Summer Views  
 Viewpoint N-09  
 Sheet 2 of 2

Drawn	BB	Date - 05/08/2022	Status	Revision
Checked	HP	Date - 05/08/2022	S8	P01
Approved	SK	Date - 05/08/2022	Application Document No. TR010032/APP/6.2	
Drawing number HE540039-CJV-ELS-SZP_ZZ000000_Z-DR-LV-00028				



Rev	Status	Rev. Date	Purpose of revision	Drawn	Chck'd	Apprv'd
P01	S8	05/08/2022	First Issued	BB	HP	SK

For location see Figure 7.16 - Visual Effects Drawing with Representative Viewpoint Locations

**Winter Viewpoint (Top):** N-10  
Date and Time: 21/02/2019 13:29

FL, Max Aperture: 50mm, 1.75  
Tripod Height: 1.5m  
Viewpoint Ground Height: 28m AOD  
Viewpoint Grid Reference: 565125E, 178268N

**Summer Viewpoint:** N-10  
Date and Time: 03/06/2019 18:04

FL, Max Aperture: 50mm, 1.75  
Tripod Height: 1.5m  
Viewpoint Ground Height: 28m AOD  
Viewpoint Grid Reference: 565125E, 178268N

Client  
**national highways**

**LOWER THAMES CROSSING**  
5th Floor Beaufort House  
15 St Botolph Street  
London EC3A 7DT

Project: LOWER THAMES CROSSING  
Drawing title: Figure 7.17  
Representative Viewpoints - Winter and Summer Views  
Viewpoint N-10  
Sheet 1 of 1

Drawn	BB	Date - 05/08/2022	Status	Revision
Checked	HP	Date - 05/08/2022	S8	P01
Approved	SK	Date - 05/08/2022	Application Document No. TR010032/APP/6.2	
Drawing number <b>HE540039-CJV-ELS-SZP_ZZ000000_Z-DR-LV-00031</b>				



Rev	Status	Rev. Date	Purpose of revision	Drawn	Chk'd	Apprv'd
P01	S8	05/08/2022	First Issued	BB	HP	SK

For location see Figure 7.16 - Visual Effects Drawing with Representative Viewpoint Locations

Camera: Canon EOS 6D MkII  
 Lens: Canon EF 50mm f/1.8 STM  
 Equipment: Manfrotto MA 454 Micro Positioning Plate  
 Manfrotto SBH-100 Ball Head

**Winter Viewpoint (Top):** N-11  
 Date and Time: 18/02/2019 15:52

FL, Max Aperture: 50mm, 1.75  
 Tripod Height: 1.5m  
 Viewpoint Ground Height: 19m AOD  
 Viewpoint Grid Reference: 566222E, 178572N

Distance to Order Limits: 13m  
 View Direction (Centre of View): SE  
 GPS Accuracy: 5m

**Summer Viewpoint:** N-11  
 Date and Time: 03/06/2019 15:52

FL, Max Aperture: 50mm, 1.75  
 Tripod Height: 1.5m  
 Viewpoint Ground Height: 19m AOD  
 Viewpoint Grid Reference: 566222E, 178572N

Distance to Order Limits: 13m  
 View Direction (Centre of View): SE  
 GPS Accuracy: 5m

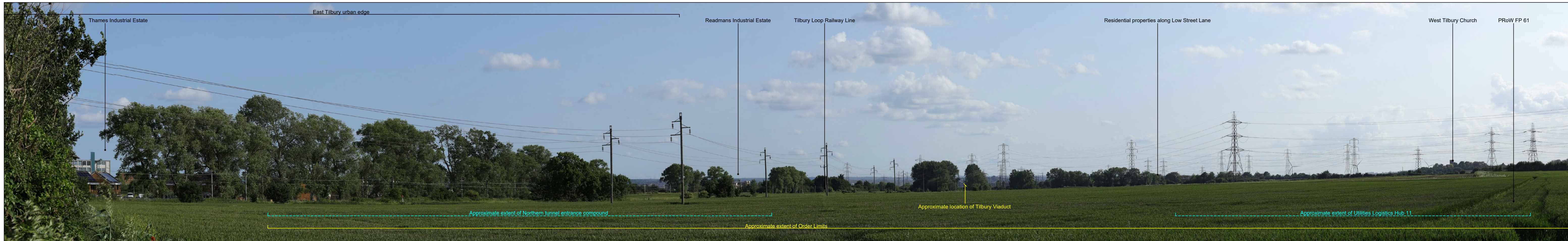


**LOWER THAMES CROSSING**  
 5th Floor Beaufort House  
 15 St Botolph Street  
 London EC3A 7DT

Project: LOWER THAMES CROSSING  
 Drawing title: Figure 7.17  
 Representative Viewpoints - Winter and Summer Views  
 Viewpoint N-11  
 Sheet 1 of 1

Drawn	BB	Date - 05/08/2022	Status	Revision
Checked	HP	Date - 05/08/2022	S8	P01
Approved	SK	Date - 05/08/2022	Application Document No. TR010032/APP/6.2	
Drawing number HE540039-CJV-ELS-SZP_ZZ000000_Z-DR-LV-00032				





P01	S8	05/08/2022	First Issued	BB	HP	SK
Rev	Status	Rev. Date	Purpose of revision	Drawn	Chck'd	Apprv'd

For location see Figure 7.16 - Visual Effects Drawing with Representative Viewpoint Locations

**Winter Viewpoint (Top):** N-12  
Date and Time: 18/02/2019 10:46

Camera: Canon EOS 6D MkII  
Lens: Canon EF 50mm f/1.8 STM  
Equipment: Manfrotto MA 454 Micro Positioning Plate  
Manfrotto SBH-100 Ball Head

FL, Max Aperture: 50mm, 1.75  
Tripod Height: 1.5m  
Viewpoint Ground Height: 7.4m AOD  
Viewpoint Grid Reference: 567448E, 178720N

Distance to Order Limits: 0m  
View Direction (Centre of View): SW  
GPS Accuracy: 5m

**Summer Viewpoint:** N-12  
Date and Time: 03/06/2019 17:37

FL, Max Aperture: 50mm, 1.75  
Tripod Height: 1.5m  
Viewpoint Ground Height: 7.4m AOD  
Viewpoint Grid Reference: 567448E, 178720N

Distance to Order Limits: 0m  
View Direction (Centre of View): SW  
GPS Accuracy: 5m



**Client**

**LOWER THAMES CROSSING**

5th Floor Beaufort House  
15 St Botolph Street  
London EC3A 7DT

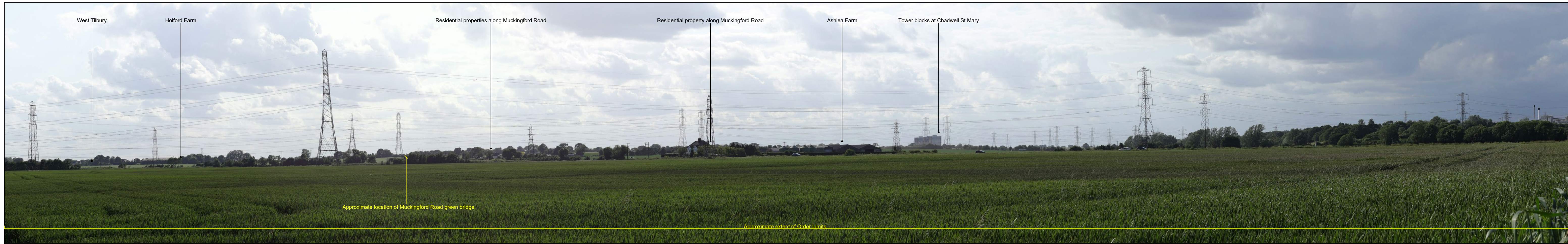
**Project**

LOWER THAMES CROSSING

**Drawing title**

Figure 7.17  
Representative Viewpoints - Winter and Summer Views  
Viewpoint N-12  
Sheet 1 of 2

Drawn	BB	Date - 05/08/2022	Status	Revision
Checked	HP	Date - 05/08/2022	S8	P01
Approved	SK	Date - 05/08/2022	Application Document No. TR010032/APP/6.2	
Drawing number				
HE540039-CJV-ELS-SZP_ZZ000000_Z-DR-LV-00033				



P01	S8	05/08/2022	First Issued	BB	HP	SK
Rev	Status	Rev. Date	Purpose of revision	Drawn	Chck'd	Apprv'd

For location see Figure 7.16 - Visual Effects Drawing with Representative Viewpoint Locations

Camera: Canon EOS 6D MkII  
 Lens: Canon EF 50mm f/1.8 STM  
 Equipment: Manfrotto MA 454 Micro Positioning Plate  
 Manfrotto SBH-100 Ball Head

**Winter Viewpoint (Top):** N-12  
 Date and Time: 18/02/2019 10:46

FL, Max Aperture: 50mm, 1.75  
 Tripod Height: 1.5m  
 Viewpoint Ground Height: 7.4m AOD  
 Viewpoint Grid Reference: 567448E, 178720N

Distance to Order Limits: 0m  
 View Direction (Centre of View): SW  
 GPS Accuracy: 5m

**Summer Viewpoint:** N-12  
 Date and Time: 03/06/2019 17:37

FL, Max Aperture: 50mm, 1.75  
 Tripod Height: 1.5m  
 Viewpoint Ground Height: 7.4m AOD  
 Viewpoint Grid Reference: 567448E, 178720N

Distance to Order Limits: 0m  
 View Direction (Centre of View): SW  
 GPS Accuracy: 5m



**LOWER THAMES CROSSING**  
 5th Floor Beaufort House  
 15 St Botolph Street  
 London EC3A 7DT

Project: LOWER THAMES CROSSING  
 Drawing title: Figure 7.17  
 Representative Viewpoints - Winter and Summer Views  
 Viewpoint N-12  
 Sheet 2 of 2

Drawn	BB	Date - 05/08/2022	Status	Revision
Checked	HP	Date - 05/08/2022	S8	P01
Approved	SK	Date - 05/08/2022	Application Document No. TR010032/APP/6.2	
Drawing number HE540039-CJV-ELS-SZP_ZZ000000_Z-DR-LV-00034				



Rev	Status	Rev. Date	Purpose of revision	Drawn	Chck'd	Apprv'd
P01	S8	05/08/2022	First Issued	BB	HP	SK

For location see Figure 7.16 - Visual Effects Drawing with Representative Viewpoint Locations

**Winter Viewpoint (Top):** N-13  
Date and Time: 19/02/2019 10:10

FL, Max Aperture: 50mm, 1.75  
Tripod Height: 1.5m  
Viewpoint Ground Height: 17.3m AOD  
Viewpoint Grid Reference: 567369E, 179182N

Distance to Order Limits: 3m  
View Direction (Centre of View): SW  
GPS Accuracy: 5m

**Summer Viewpoint:** N-13  
Date and Time: 03/06/2019 17:50

FL, Max Aperture: 50mm, 1.75  
Tripod Height: 1.5m  
Viewpoint Ground Height: 17.3m AOD  
Viewpoint Grid Reference: 567369E, 179182N

Distance to Order Limits: 3m  
View Direction (Centre of View): SW  
GPS Accuracy: 5m



**LOWER THAMES CROSSING**  
5th Floor Beaufort House  
15 St Botolph Street  
London EC3A 7DT

Project: LOWER THAMES CROSSING  
Drawing title: Figure 7.17  
Representative Viewpoints - Winter and Summer Views  
Viewpoint N-13  
Sheet 1 of 2

Drawn	BB	Date - 05/08/2022	Status	Revision
Checked	HP	Date - 05/08/2022	S8	P01
Approved	SK	Date - 05/08/2022	Application Document No. TR010032/APP/6.2	
Drawing number <b>HE540039-CJV-ELS-SZP_ZZ000000_Z-DR-LV-00037</b>				



Rev	Status	Rev. Date	Purpose of revision	Drawn	Chck'd	Apprv'd
P01	S8	05/08/2022	First Issued	BB	HP	SK

For location see Figure 7.16 - Visual Effects Drawing with Representative Viewpoint Locations

Camera: Canon EOS 6D MkII  
 Lens: Canon EF 50mm f/1.8 STM  
 Equipment: Manfrotto MA 454 Micro Positioning Plate  
 Manfrotto SBH-100 Ball Head

**Winter Viewpoint (Top):** N-13  
 Date and Time: 19/02/2019 10:10

FL, Max Aperture: 50mm, 1.75  
 Tripod Height: 1.5m  
 Viewpoint Ground Height: 17.3m AOD  
 Viewpoint Grid Reference: 567369E, 179182N

Distance to Order Limits: 3m  
 View Direction (Centre of View): SW  
 GPS Accuracy: 5m

**Summer Viewpoint:** N-13  
 Date and Time: 03/06/2019 17:50

FL, Max Aperture: 50mm, 1.75  
 Tripod Height: 1.5m  
 Viewpoint Ground Height: 17.3m AOD  
 Viewpoint Grid Reference: 567369E, 179182N

Distance to Order Limits: 3m  
 View Direction (Centre of View): SW  
 GPS Accuracy: 5m



**LOWER THAMES CROSSING**  
 5th Floor Beaufort House  
 15 St Botolph Street  
 London EC3A 7DT

Project: LOWER THAMES CROSSING  
 Drawing title: Figure 7.17  
 Representative Viewpoints - Winter and Summer Views  
 Viewpoint N-13  
 Sheet 2 of 2

Drawn	BB	Date - 05/08/2022	Status	Revision
Checked	HP	Date - 05/08/2022	S8	P01
Approved	SK	Date - 05/08/2022	Application Document No. TR010032/APP/6.2	
Drawing number		HE540039-CJV-ELS-SZP_ZZ000000_Z-DR-LV-00038		



P01	S8	05/08/2022	First Issued	BB	HP	SK
Rev	Status	Rev. Date	Purpose of revision	Drawn	Chck'd	Apprv'd

For location see Figure 7.16 - Visual Effects Drawing with Representative Viewpoint Locations

Camera: Canon EOS 6D MkII  
 Lens: Canon EF 50mm f/1.8 STM  
 Equipment: Manfrotto MA 454 Micro Positioning Plate  
 Manfrotto SBH-100 Ball Head

**Winter Viewpoint (Top):** N-14  
 Date and Time: 18/02/2019 16:03

FL, Max Aperture: 50mm, 1.75  
 Tripod Height: 1.5m  
 Viewpoint Ground Height: 25.4m AOD  
 Viewpoint Grid Reference: 565949E, 178890N

Distance to Order Limits: 1.2m  
 View Direction (Centre of View): E  
 GPS Accuracy: 5m

**Summer Viewpoint:** N-14  
 Date and Time: 03/06/2019 16:05

FL, Max Aperture: 50mm, 1.75  
 Tripod Height: 1.5m  
 Viewpoint Ground Height: 25.4m AOD  
 Viewpoint Grid Reference: 565949E, 178890N

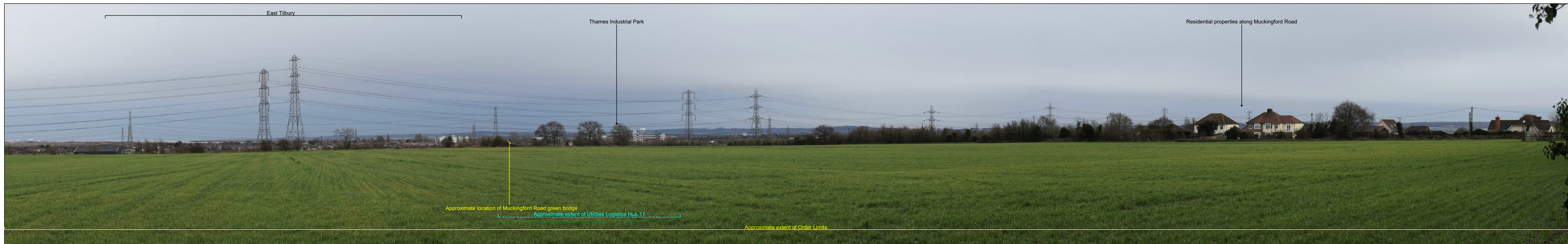
Distance to Order Limits: 1.2m  
 View Direction (Centre of View): E  
 GPS Accuracy: 5m



**LOWER THAMES CROSSING**  
 5th Floor Beaufort House  
 15 St Botolph Street  
 London EC3A 7DT

Project: LOWER THAMES CROSSING  
 Drawing title: Figure 7.17  
 Representative Viewpoints - Winter and Summer Views  
 Viewpoint N-14  
 Sheet 1 of 2

Drawn	BB	Date - 05/08/2022	Status	Revision
Checked	HP	Date - 05/08/2022	S8	P01
Approved	SK	Date - 05/08/2022	Application Document No. TR010032/APP/6.2	
Drawing number		HE540039-CJV-ELS-SZP_ZZ000000_Z-DR-LV-00039		



Rev	Status	Rev. Date	Purpose of revision	Drawn	Chck'd	Apprv'd
P01	S8	05/08/2022	First Issued	BB	HP	SK

For location see Figure 7.16 - Visual Effects Drawing with Representative Viewpoint Locations

**Winter Viewpoint (Top):** N-14  
Date and Time: 18/02/2019 16:03

Camera: Canon EOS 6D MkII  
Lens: Canon EF 50mm f/1.8 STM  
Equipment: Manfrotto MA 454 Micro Positioning Plate  
Manfrotto SBH-100 Ball Head

FL, Max Aperture: 50mm, 1.75  
Tripod Height: 1.5m  
Viewpoint Ground Height: 25.4m AOD  
Viewpoint Grid Reference: 565949E, 178890N

Distance to Order Limits: 1.2m  
View Direction (Centre of View): E  
GPS Accuracy: 5m

**Summer Viewpoint:** N-14  
Date and Time: 03/06/2019 16:05

FL, Max Aperture: 50mm, 1.75  
Tripod Height: 1.5m  
Viewpoint Ground Height: 25.4m AOD  
Viewpoint Grid Reference: 565949E, 178890N

Distance to Order Limits: 1.2m  
View Direction (Centre of View): E  
GPS Accuracy: 5m



**LOWER THAMES CROSSING**  
5th Floor Beaufort House  
15 St Botolph Street  
London EC3A 7DT

Project: LOWER THAMES CROSSING  
Drawing title: Figure 7.17  
Representative Viewpoints - Winter and Summer Views  
Viewpoint N-14  
Sheet 2 of 2

Drawn	BB	Date - 05/08/2022	Status	Revision
Checked	HP	Date - 05/08/2022	S8	P01
Approved	SK	Date - 05/08/2022	Application Document No. TR010032/APP/6.2	
Drawing number HE540039-CJV-ELS-SZP_ZZ000000_Z-DR-LV-00040				

If you need help accessing this or any other National Highways information, please call **0300 123 5000** and we will help you.

© Crown copyright 2022.

You may re-use this information (not including logos) free of charge in any format or medium, under the terms of the Open Government Licence. To view this licence:

visit [www.nationalarchives.gov.uk/doc/open-government-licence/](http://www.nationalarchives.gov.uk/doc/open-government-licence/)

write to the **Information Policy Team, The National Archives, Kew, London TW9 4DU**, or email [psi@nationalarchives.gsi.gov.uk](mailto:psi@nationalarchives.gsi.gov.uk).

Mapping (where present): © Crown copyright and database rights 2022 OS 100030649. You are permitted to use this data solely to enable you to respond to, or interact with, the organisation that provided you with the data. You are not permitted to copy, sub-license, distribute or sell any of this data to third parties in any form.

If you have any enquiries about this publication email [info@nationalhighways.co.uk](mailto:info@nationalhighways.co.uk) or call **0300 123 5000\***.

\*Calls to 03 numbers cost no more than a national rate call to an 01 or 02 number and must count towards any inclusive minutes in the same way as 01 and 02 calls. These rules apply to calls from any type of line including mobile, BT, other fixed line or payphone. Calls may be recorded or monitored.

Printed on paper from well-managed forests and other controlled sources when issued directly by National Highways.

Registered office Bridge House, 1 Walnut Tree Close, Guildford GU1 4LZ

National Highways Company Limited registered in England and Wales number 09346363